

Kona-konaba

Munibung

Musings

Magazine of the Munibung Hill Conservation Society

Promoting Urban Ecology for a Nature Positive future



Winter Solstice Issue

The Right to Know

Contents: Winter Solstice

Longest day of the year - June 21

ON THE COVER

The right to know

Open letter to Council

Picture stories

New CEO for Lake Macquarie City Council

Coming up - events

FEATURES

Sounds of Sustainability

REGULARS

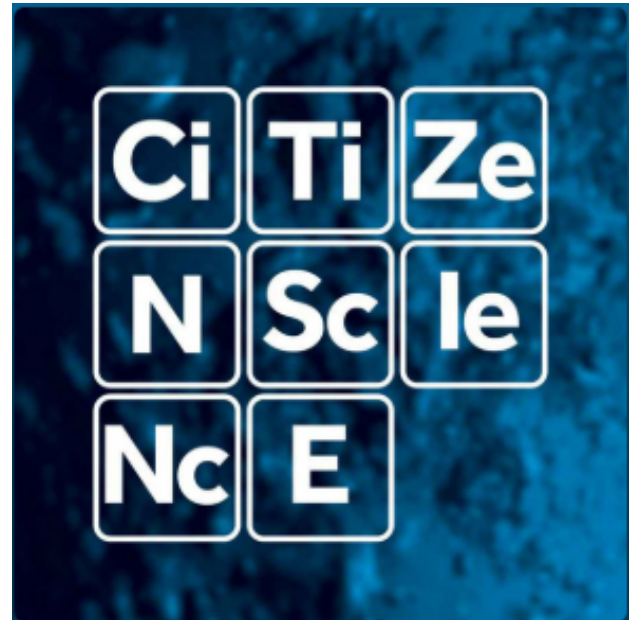
Through the lens with Eddie

Close-ups with Ray Woods

Caring for Country

On the Verge

Night Sky Conservation



Every kid needs a swamp, every swamp needs a kid - see story inside
It's not rocket science ... we can all be part of this appreciation for nature by keeping an eye out for what's going on around us and contributing to the bigger picture.



MARCH 2026 ISSUE

Nightscape

- How are bright headlights affecting nocturnal species?
- Introducing the DarkSky One concept car
- Advocate updates
- Ten new International Dark Sky Places

On the cover:

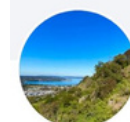
One of the Lake Mac Council promotional cards circulated during the lead up period to the preparation of the Munibung Hill Management Plan.

Munibung Hill Conservation Society advocates for the protection of Munibung Hill as a place of great significance for first peoples. We pay respects to Elders past, present and emerging. We work to achieve recognition for this land as being occupied by Aboriginal people of the Awabakal nation that was never ceded.

To get the latest dark sky news click here [Issue 123, 2026](#)



Find us on Facebook at ...



Munibung Hill Trails
275 likes • 305 followers

Open Letter to Council about the Draft Operational Plan and a request for public disclosure and transparency

Mayor Adam Shultz
Lake Macquarie City Council
Main Road
Speers Point NSW 2284

16 April 2026

Subject: Draft Operational Plan – Invitation to comment

At the March meeting of Lake Macquarie City Council, a draft Operational Plan and Budget 2026 -2027 was tabled. Councillors adopted this draft plan and budget and had it placed on public exhibition.

Your press release, as per the link below, invites the community to make submissions and provide feedback.

<https://www.lakemac.com.au/News-articles/Mayors-message-planning-for-success>

A list of projects and their budget allocations is to be found at this website link:

<https://shape.lakemac.com.au/opplan26-27>

Munibung Hill is not mentioned at all. We are aware that millions of dollars have been collected from developer contributions over many years from the surrounds of Munibung Hill. The works detailed in the draft operation plan are financed from a pool of money that includes monies raised from developments around Munibung Hill.

We submit that Munibung Hill is at least as worthy of funding as those listed. The funds earmarked to address public access and environmental management in the Munibung Hill Management Plan is contributing to other programs, including upgrades to existing facilities. This siphoning off of Munibung Hill money has been going on year on year, starving Munibung Hill of essential funds.

Had funds raised by developer contributions sourced from housing and light industrial development on Munibung Hill over the years been allocated and expended by previous Councils in a previous Management Plan then Munibung Hill would be due for the sort of upgrades that are taking place now at various sporting venues.

To know that money that was allocated to protecting and managing Munibung Hill is being spent elsewhere is, we submit, a gross injustice.

There are many organisations advocating for their venues to receive more funding. There are fewer advocates for Munibung Hill, making it all the more important that Council staff be a voice for the voiceless and that the elected representatives, including the Mayor, take the initiative to correct the imbalance.

This draft document presents the perfect avenue for there to be a revision of the current operational plan to include Munibung Hill and not to leave her sidelined and discriminated against with funds being continually siphoned away. The Munibung Hill Management Plan states what a worthy natural landscape Munibung Hill is but this is not reflected in Council's allocation of funds.

In the interests of full disclosure and transparency and taking the community into its confidence, we request that an open letter from the Mayor's office be circulated to the community, by way of media release and Council publications such as EcoAdvocate, advising them:

1. why Munibung Hill contributions are spent on other projects and
2. outlining when the Munibung Hill Management Plan will be actioned.

We look forward your open letter to the community in response to the above.

Kind Regards

Fergus Hancock
President
Munibung Hill Conservation Society

Good evening Mr Hancock,

Thank you for providing the correspondence to Mayor Adam Shultz on Friday 17 April, which was provided to staff on the same date.

The correspondence was treated as a submission on the draft operational plan and handled accordingly. I understand you may have received confirmation, including the plan process, in the last couple of days.

If, after considering the outcome of the Operational Plan, you would still request a meeting, it would be appropriate to seek one with the relevant staff rather than the Mayor, given that it is an operational plan item.

Please let me know if you would like me to forward the meeting request to the relevant staff for further engagement.

Kind regards,
Kellie Harris
(EA to Mayor Adam Shultz)

Thursday, 21 May, 2026

The right to know

This response completely ignores the request as noted below:

In the interests of full disclosure and transparency and taking the community into its confidence, we request that an open letter from the Mayor's office be circulated to the community, by way of media release and Council publications such as EcoAdvocate, advising them:

- why Munibung Hill contributions are spent on other projects and
- outlining when the Munibung Hill Management Plan will be actioned.

We look forward your open letter to the community in response to the above.

oOo

The Society will continue to advocate for the protection and conservation of Munibung Hill and the implementation of the Management Plan and associated Concept Plan.

We will keep members and friends informed.

PICTURE STORIES

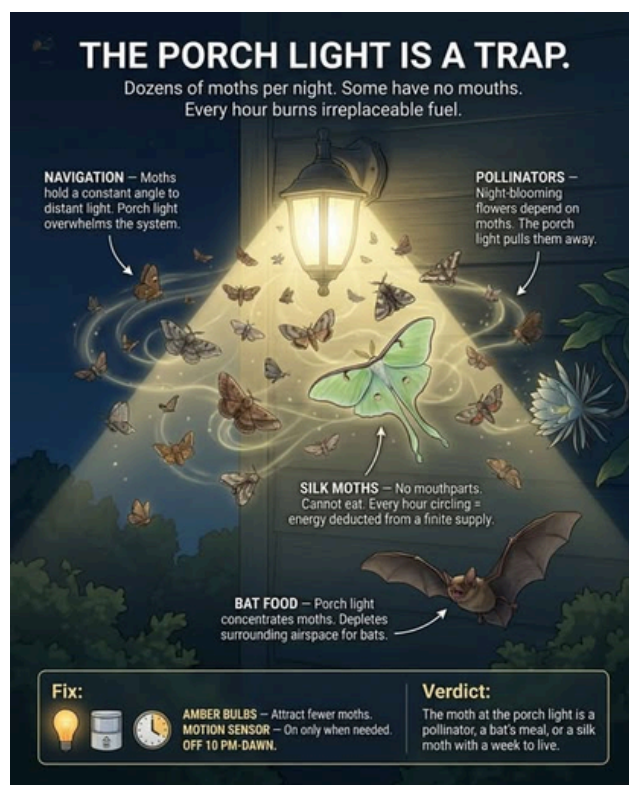
A PICTURE IS WORTH A THOUSAND WORDS ..

VISUALLY, our brains process imagery an astonishingly 60,000 times faster than text.

This timeless adage originally stems from an advertising campaign in the early 1900s, though it traces its modern roots back to these concepts:

Instant Impact: A single still frame conveys complex emotions and context instantly.

Universal Language: It transcends the barriers of written or spoken vocabulary.



People who pay particular attention to what's going on in relation to a particular aspect of nature, a fungi, a plant, an animal, or ecosystem. "A person who is a 'looker-er' would be: Tiwalinga." - Miromaa Aboriginal Language and Technology Centre, Boolaroo.

Through the lens with Eddie ...

Editor: Our conversation with Eddie Bernard continues to reveal the variety of wildlife that lives at Munibung Hill and visits their yard over the course of the year, providing ecosystem services at no charge. That's apart from the sheer enjoyment and company these birds bring to the neighbourhood, for anyone who cares to pay attention and offer a safe place for visiting.

EDDIE BERNARD: Orb spider in it's web and a Shrike Thrush not seen in the area for 40 years!

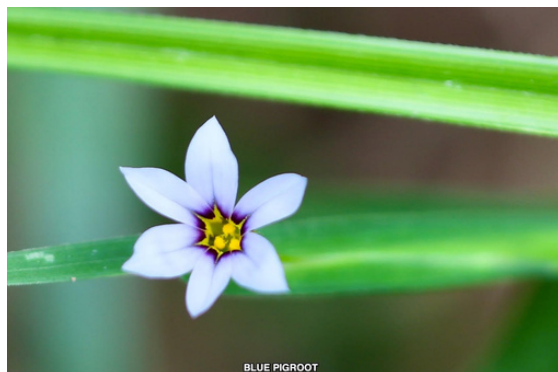


Close ups with Ray Woods



Weeds of Munibung Hill

Top Left: Bracken (Weed-like on Lucilla Ridge)
Top Right: Formosa Lily
Below: Blue Pigroot



Super Saturday Session: Microbats and Landcare in Cooranbong



Two insightful talks and the opportunity to catch up with other Landcare volunteers.

Fernanda Tique Bernal will provide a detailed talk on local microbats and her studies and work in this area.

A Landcare site update will also be provided by Julia Stenton, sharing her experiences taking care of a special site in Cooranbong where endangered bushland, wetland and riparian vegetation communities merge to create valuable wildlife habitat.

Saturday 13 June 2026, 9am-12noon
Landcare and Sustainable Living Centre, umali
barai-ku
Numbers are limited,
please register by Tuesday 9 June.

*Look out for the verge
garden feature later in
the magazine*



“With the Seasons” is a full-day winter solstice gathering at Shepherd’s Ground Eco Farm and Village an eco community based around the principles of off-grid, low-impact living.

The event invites people to pause, reflect, and explore practical, grounded ways of living more closely with the rhythms of the earth.

Through conversations, hands-on sessions, and time on the land, participants can see how an off-grid, low-impact community works in real life and take home ideas that fit their own circumstances.

Created by **ReNew Living** as part of the Love Local series, the day is designed for anyone curious about regenerative living, from home gardeners to families rethinking how they want to live.

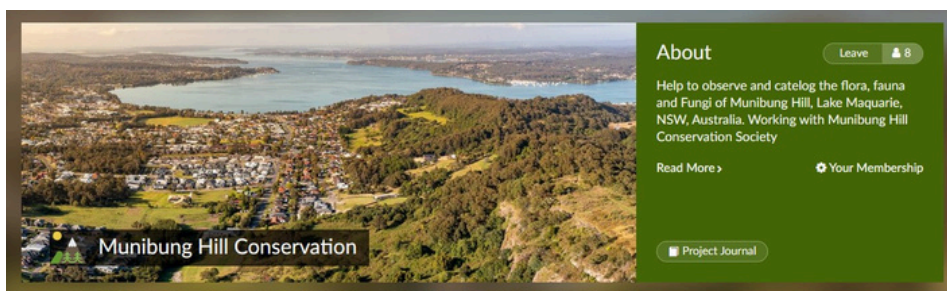
21 Jun | Shepherds Ground Eco Village, Butterwick
Time: 10am – 3pm / Cost: \$33.88 (single) - \$82 (family)

YOU SEE A HEALTHY LAWN.
I see a desert that happens to be green.

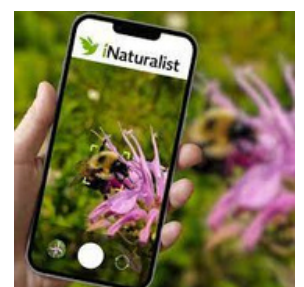
| THE LAWN | THE NATIVE YARD |
|--|---|
| Non-native monoculture. No nectar. No caterpillars. No nesting. No life. | Native plants. Caterpillars. Ground bees. Fireflies. Birds. |
| No native plants | No caterpillars |
| No caterpillars | No nesting food (chickadees need 6,000-9,000 per clutch) |
| No leaf litter | No firefly larvae |
| No bare soil | No ground-nesting bees (70% of native species) |

The lawn isn't killing wildlife actively. It's killing wildlife by being nothing.

The greenest thing in your yard may be the emptiest.



The **iNaturalist** home page for Munibung Hill Conservation observer and identifier posters.



Making way for native lushness

The Friends of Munibung Hill Landcare group is based in the Parkstone Close area of Speers Point. Gavin Ord reports ...

OUR ATTENTION HAS BEEN focused on making space for native species to regenerate; concentrating its efforts on the banks of Hawkins Creek for the past six months.

The team has been clearing lantana and small leaved privet to make way for our native stabilising species.

We are mainly encouraging sandpaper figs which grow naturally in our site and planting lamandra longifolia to help stop erosion.

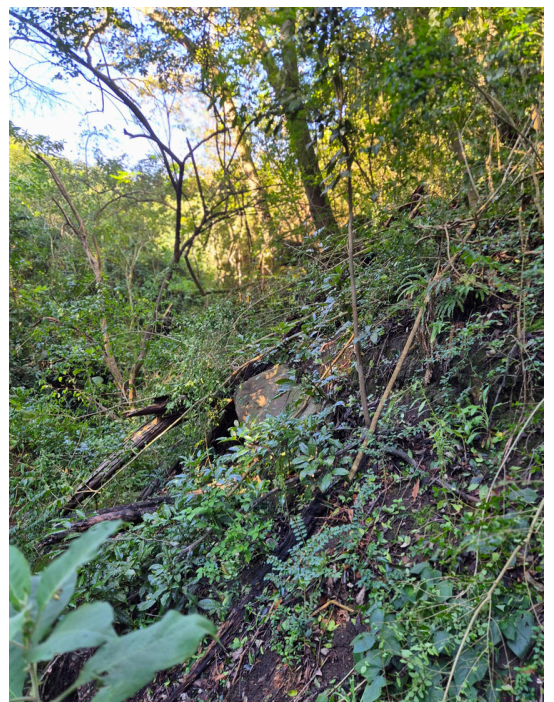
With the clearing of weeds we are finding numerous native ground covers returning and that means we've been busy identifying new species as they grow and get re-established.

The plan is to concentrate on the banks for at least another six months, before expanding our range to include other sections of the creek catchment.



Lushness is a noun that describes the state of being abundant, rich, or luxuriant. It most commonly refers to thick, healthy, and vibrant green plant life, but it can also denote extravagant luxury or a rich, pleasing quality to the senses.

It is a fittig way to describe the site and a credit to the efforts of Gavin and the team.



Expanding our gaze to include Sky Country as it was known by indigenous people



Landcare Sighting from Jenny Mason of the Lucilla Ridge Landcare site in Macquarie Hills. Ref: Lake Mac Landcare

While weeding around plantings from earlier in the year, Jenny noticed a plant that only had the "skeleton" of a few leaves left.

Looking closer, she discovered these interesting creatures that look like they came straight out of a sci-fi movie! Using iNaturalist, another volunteer was able to identify them as Cattle-poisoning Sawfly larvae.

The transformation continues, the biodiversity flourishes



Above and below: Jenny Mason at the Lucilla Ridge Landcare site, where new seedlings are being planted. Photos: Heather Carter



The Lucilla Ridge Landcare team have planted 35 new plants. They include:

- Cheese Trees (*Glochidion ferdinandi*),
- Hairy Lolly Bush (*Clerodendrum tomentosum*),
- Sickle Leaf Wattle (*Acacia falcata*),
- *Lomandra longifolia*,
- Thyme Honey Myrtle (*Melaleuca thymifolia*),
- Brush Muttonwood (*Myrsine howittiana*),
- Scentless Rosewood (*Synoum glandulosum*),
- Bottlebrush Grass Tree (*Xanthorrhoea macronema*)
- *Ziera smithii*.

Thirty five more tubestock will be planted on the Hill site in coming weeks.

It's a work in progress at Biddabah Creek Landcare site



Morning glory continues to be an issue (above), but the group also continues to keep on top of it (below). Photos: Vina chubb.



Every kid needs a swamp

Protecting the breeding waterways for our water birds



And every swamp needs a kid, writes Lyndal Wilson, Birdlife Australia ...

WE NEED to understand just how important birds are to the health and beauty of our natural world.

Through Birdata, Australia's national bird monitoring program, thousands of citizen scientists, people just like us, are turning magical moments in nature into something powerful: evidence.

Every day, across the country, people stand quietly in wetlands, forests and coastlines. They watch. They listen. They record.

Together, they've contributed more than 30 million vetted bird sightings into Birdata.

You might remember a bird that first connected you to nature. Perhaps it was a soaring pelican, the magpies in the backyard, or the sweetness of the wild ducks at your own local wetland (see right)

For all of us, these birds are part of what makes our natural world so rich. The ecosystems we depend on, depend on them.

They deserve and are worth protecting. **Because without action, we risk losing them.**

Ref: Birdlife Australia.

Vina Chubb reports on how bushland and waterway management at the Biddabah Creek Wetland site is progressing.

Over the past few months, high rainfall and humid conditions have triggered significant growth in the bushland surrounding our waterway.

This has presented an ongoing challenge for our team, particularly in managing two highly invasive species: Morning Glory and Crofton Weed.

Because the vegetation around the waterway is quite dense, maintenance here is a constant, long-term project.

However, we have seen great success at the front of the site; being more accessible, we have successfully eradicated the once-dominant Paspalum and replaced it with flourishing native plants.

Wildlife Update

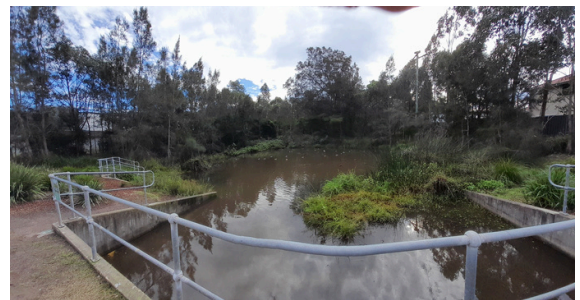
Our local waterway remains a thriving habitat for several resident species. Our regular inhabitants continue to enjoy the area, including:

- Purple Swamphens
- Maned (Wood) Ducks
- Pacific Black Ducks
- Mallards
- Buff-banded Rails (including a resident family)

In addition to our regulars, there are often visiting species.

A pair of Ibis has been spotted near the small waterfall where the creek enters the bushland waterway - their behaviour suggests they may be looking to nest.

Meanwhile, a Purple Swamphen has already established a nest within the tall reeds.



What a sight for sore eyes. More than 30 birds were counted on the wetland - frolicking around and clearly delighting in the fact that there was a local habitat for them to play and hang out with family and friends.



THE MOST SUCCESSFUL PREDATOR ON EARTH LIVES IN YOUR YARD.

Not the lion. Not the shark. Not the falcon. Her.

30,000 LENSES — Sees nearly every direction simultaneously. Processes visual information faster than any vertebrate measured.

4 INDEPENDENT WINGS — Separate muscle systems. Hover. Reverse. Pivot on a point. No drone can replicate this at her scale.

LEG BASKET — Assembles in flight. Closes around the target faster than a human eye blink. She eats on the wing.

LESS THAN A PAPERCLIP — 300 million years old as a lineage. Before birds. Before flowers. Before the continents were in the right place.

HUNTING SUCCESS RATE — Prey captured per attempt

| | | | |
|--|---|--|---|
|  LION ~25% |  GREAT WHITE ~50% |  PEREGRINE ~40-60% |  DRAGONFLY 90%+ |
|--|---|--|---|

BEFORE WINGS — 1-3 years as aquatic nymph. Jet-propelled. Armored. Ate mosquito larvae in the mud. Same target. New dimension.

300 million years of practice. She'll be on your pond at first light.



The Dragonfly



#167 Roots of the Matter: Why Australia's Urban Trees Are Fighting for Their Lives with Greg Moore

It's more than just trees and urban forests, this is about how we rely on trees for health, wealth and well being.



The Renewy Living Podcast helps us make sustainability feel simple and doable. Based in Newcastle on Awabakal and Worimi Country, host Mardi Lee shares practical tips, local stories, and examples of businesses leading the way. Each episode explores how to consume less, strengthen community connections, and thrive in your own neighbourhood, all through small, meaningful actions.

Jezweb

Proudly Supports

Munibung Hill Conservation Society

Website Design • Search Engine Optimisation • Website Hosting

📞 1300 024 766 ✉ help@jezweb.au 🌐 www.jezweb.com.au





With spectacular views and unique cultural values, Munibung Hill is one of Lake Macquarie’s most precious landscapes.

Refresh your memory: *The Munibung Hill Management Plan sets out how we will manage access and use of Munibung Hill over the next decade, to protect important natural and cultural values, and provide safe access for passive recreation.*

Check it out [HERE](#)



Wild places are not empty land waiting to be used. They are living systems with deep history and meaning. Once we trade them for short term gain, there is no getting them back. Support our public lands!

Is the Munibung Hill Management Plan on the new CEO’s agenda?



Changing of the Guard at LMCC

I was pleased to hear of the appointment of David Hughes as the new Chief Executive Officer of Lake Macquarie City Council, writes Greg Piper, Independent MP for Lake Macquarie.

Aside from David's (impressive) credentials, which include 8 years as a Director Built and Natural Assets at Council, he brings a wealth of local knowledge and a true passion for supporting our community.

I acknowledge and commend Tony Farrell who has stepped into the interim position and thank him for his dedication and contributions during his time in the hot seat.

Congratulations David, I look forward to working with you in your new role to build on the fantastic legacy of Council and their commitment to the people of Lake Macquarie.

Source: Greg Piper, Lake Macquarie Matters, May 2026, e-Newsletter



[Meet incoming CEO David Hughes in this presentation with Mayor Adam Schultz](#)

The Groundswell Collective setting the pace with new verge garden initiative

The Groundswell Collective verge garden program is wasting no time transforming monoculture lawns into biodiverse habitats.

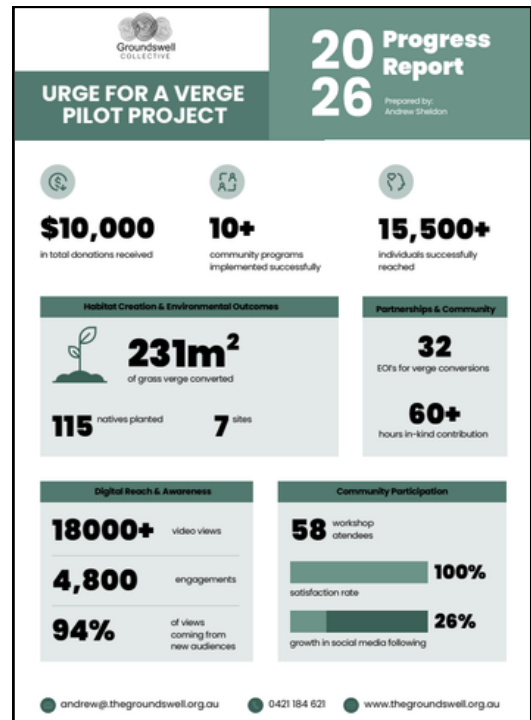
Anna Noon reports:

The project has established demonstration sites, delivered educational and hands-on workshops, developed how-to resources and launched community education through social media.

Some of our verge garden posts have reached more than 10,000 local people, and volunteer contributions and donated mulch have helped extend the impact even further.

Plus, we're only just getting started - we have plenty more planned for the remainder of the fund with more gardens to come!

We've also recently applied for a grant to grow the program into Newcastle and to add a street tree component to our Lake Mac initiative.



Anna Noon, of the Groundswell Collective, hopes to encourage people to convert their nature strips into gardens. Picture by Peter Lorimer



Sprucing up strips of suburbia

Josh Leeson

MOST homes in suburban Newcastle and Lake Macquarie have a council or nature strip, but the majority are bland and boring.

Urban nature restorer Anna Noon, from Lake Macquarie environmental not-for-profit the Groundswell Collective, wants to spruce up that little slice of suburbia. The Groundswell Collective is launching its Urge For A Verge program to help residents transform their grassed nature strips into native gardens.

"A lot of people are trying to maintain these gardens to keep them decent," Ms Noon said.

"So there are heaps of advantages in terms of reduced

maintenance and it helps with water flow and flooding.

"Obviously we're supporting biodiversity with planting these native plants. We're also cooling the local environment, and there are some studies that show that it actually increases property values as well. The greener your house and the more landscaping around it, the more appealing it is to people."

The Urge For A Verge program will involve workshops on how to transform your nature strip, journey stories, demonstration gardens, and recommendations on appropriate plant species.

Ms Noon said they promoted a "no-dig approach". Digging up nature strips can create issues with water and

gas pipes and NBN cabling.

Residents also need to consider access to footpaths and driveways.

"You have to consider what your services are under that space," she said.

"Are you leaving a path for pedestrians? Is there a way for people to get in and out of their car? Can the postie get to the mailbox? There are lots of things to think about, but it's not insurmountable."

The City of Newcastle has published guidelines for building gardens on nature strips, while Lake Macquarie council is developing its policies. The Newcastle Urban Forest policy points out that residents must apply for a permit before starting work, plants must not grow more than 500 millimetres or be

less than one metre from driveways and that native plants and non-native annuals are encouraged.

Ms Noon was waiting for Lake Macquarie council to adopt its own policy.

"They had an urban greening strategy that was released in 2022 and one of the major key actions from that greening strategy was to develop verge guidelines and they gave themselves up to four years to do that," she said.

"That four years is up in June, so we're anticipating that it will be coming in soon in line with us kicking off this program."

A spokesperson for Lake Macquarie council said they fully supported the principle of verge gardens.

"They have the potential

to enhance the liveability of our neighbourhoods, make our city cooler and improve the community's health and wellbeing," the spokesperson said. "Planting trees and maintaining gardens on the road verge creates natural amenity within an urban environment and contributes to the delivery of our Urban Greening Strategy and Urban Heat Strategy."

The council is expected to finalise its guidelines by mid-year. "These guidelines are needed to ensure pedestrians can safely use the space, motorists can park along the kerb where allowed, sightlines are maintained for traffic safety and utilities such as water, gas and electricity aren't affected," the spokesperson said.



GREENING OUR VERGES



Lake Macquarie residents can now apply to plant a street tree and [verge garden on their nature strip.](#)

Verge gardens and street trees create natural amenity in our city, helping us keep cool, create wildlife habitat and reduce stormwater runoff.

Verge gardens and street trees enhance the liveability of our neighbourhoods, make our city cooler and improve health and wellbeing.

Planting trees and maintaining gardens on the road verge creates natural amenity within an urban environment and contributes to the delivery of Council's Urban Greening Strategy and Urban Heat Strategy.

Urban Greening Strategy Vision: A healthy, diverse and resilient urban forest that actively supports the health and wellbeing of our communities, contributes to the liveability of neighbourhoods, and protects and enhances our unique natural landscapes.

Greening our verges will create wildlife habitat, filter pollutants, reduce stormwater runoff and moderate urban temperatures, and so Council encourages these goals by planting trees and gardens on verges across the city.

NOTE: It is important that we put the right trees in the right places and that any verge planting doesn't cause safety or access issues on our streets.

After a resident's application is approved, they can take their approval letter to the Landcare and Sustainable Living Centre to collect their ten free plants.



Anna Noon praises Lake Mac free plant verge garden policy. Source: Newcastle Herald

Let's get croaking



Protecting local frog species

We know precious little about the frog species living at Munibung Hill.

Which species, their distribution, their population numbers, their health and how we might best protect and conserve them. This presentation is therefore of special interest to us.

As a part of Lake Mac Landcare National Volunteer Week, Dr Alex Callen from University of Newcastle, delivered a presentation about frogs and their conservation.

Alex works as part of the University's Amphibian ICU (Integrated Conservation Unit) which uses a multi-method approach of field-based studies and lab-based work to help save our threatened frogs.

Her talk covered the growing threats to frogs from climate change, habitat destruction and diseases and focused on research and conservation efforts for local threatened species like the Green and Golden Bell Frog and Littlejohn's Tree Frog.

Alex shared ways our volunteers and community can help, such as:

- Speaking up about frog conservation
- Exploring volunteer opportunities like those promoted on Conservation Science @ UON
- Taking part in Citizen Science efforts like FrogID to share frog calls you hear.

Alex and her colleagues were recently interviewed as part of the **Citizen Science Show Podcast**. Listen to the podcast to learn more about her work and ways to help frogs. Source: Lake Mac Landcare e-newsletter

A city becomes truly sustainable when movement, nature, and human life no longer compete for space, but evolve together in balance.



The Eco Angel Program is designed to help schools, community groups, businesses and individuals come together and keep Lake Macquarie clean all year round.

We will help by:

- Promoting your event and encouraging others to volunteer,
- Providing a free clean-up kit including litter bags, gloves, merchandise and appropriate paperwork,
- Collecting and disposing of waste from the clean up.

Munibung Hill Conservation Society

Munibung Hill Conservation Society is a not-for-profit organisation. The Society has no paid staff. The generous contribution of people volunteering their time and expertise is how the Society is able to deliver on its advocacy Vision for Munibung Hill.

Financial contributions are appreciated. Offers of help are welcome.

The name Munibung Hill was gazetted at the NSW Geographical Names Board on December 23, 1977. There is no record of why this name was chosen. It was not the given name by the Awabakal people, on whose Country she is located. Kona-konaba was the aboriginal name, meaning place of ochre.

Kona-konaba is situated within an area administered by the [Biraban](#) Local Aboriginal Land Council (LALC), one of five LALCs within Awabakal Country. More background information [About Munibung Hill](#) on the MHCS website.

Munibung Musings (MM) is published as a digital magazine only.

Contributors: Eddie Bernard, Heather Carter, Vina Chubb, Fergus Hancock, Mardi Lee, Jenny Mason, Rachel Mundy, Gavin Ord, Ray Woods.

Proof reader: Heather Carter

Other sources: As referenced throughout.

Content ideas are welcome. Send with full contact details including mobile contact number to:

The Editor, Munibung Musings, MHCS

Contact: E: munibunghcs@gmail.com

Munibung Hill Conservation Society

Membership options

We value everyone who has signed up to be a member or subscriber.

Munibung Hill Conservation Society (MHCS) does not have a joining fee or an annual membership fee. We rely entirely on the generosity of people to make a contribution as they are able. In 2025 we introduced a new membership structure to better reflect the changing circumstances and to more closely identify with standard membership practices.

We therefore invite members to revisit their existing membership status with a view to helping MHCS remain financially viable over the long term.

There are four levels of membership. To make any changes, visit the website ...

<https://www.munibunghill.com/membership-affiliate-application/>

Perhaps you would prefer to remain an Ordinary member, but make an annual one off donation. That's fine and would be greatly appreciated.

- Ordinary member - Free, as is currently the case, all current memberships rolling over.
- Standard member - \$4.00 per month (or equivalent*) i.e. \$0.92c a week
- Supporting member - \$8.00 per month (or equivalent*) i.e. \$1.84 a week
- Sustaining member - \$25.00 per month (or equivalent*) i.e. \$6.25 a week (cup a coffee)

All membership types can be paid as a lump sum i.e. as an annual total amount. Monthly rate x 12.

* In-kind contribution in lieu, such as an active member of a Munibung Hill focused Landcare Group.

All members receive the Society magazine Munibung Musings.

There are no additional special benefits from being a paid up financial member. The reward is, the sheer knowledge and satisfaction of knowing you have contributed to the organisation remaining viable and able to carry out its mission over the long term.

The join, change membership type or to donate, please visit: <https://www.munibunghill.com/membership-affiliate-application/>

SOUNDS OF SUSTAINABILITY FEATURE



Sunday 31 May, dawned fine and sunny for the start of a nature positive day when community advocates gathered at Thomas H. Halton Park, Croudace Bay for the Sounds of Sustainability Festival.

It was all about learning and sharing how to take practical action for a more sustainable world. It included:

- Native plant sale and habitat creation
- The Repair Cafe and waste reduction
- Storytelling for kids: make an insect hotel or skink shelter
- Art installation
- Wildlife rescues
- How to learn about clean energy options
- Meeting local community advocates and groups

and the there was music as well.

The event was organised by the Valentine Area Sustainable Neighbourhood Group in partnership with Warners Bay Area Sustainable Neighbourhood Group.



Hunter Wildlife Rescue



Gayle Russell, President, Valentine Area Sustainable Neighbourhood Group.



Repair Cafe is an activity of the Warners Bay Area Sustainable Neighbourhood Group



Waste reduction and the circular economy is an activity of the Toronto Sustainable Neighbourhood Group

SOUNDS OF SUSTAINABILITY FEATURE



Lake Macquarie Landcare Vounteer Network Deputy Chairperson: Marion Lugg and volunteer Pam Morgan



ReNew Hunter had an extensive display and a magazine giveaway as part of their stand (above) and a display of electric vehicles (below)



Dennis Archibald with his electric Fiat. The ideal car for urban situations.



The Eastlakes U3A band

Quality lighting starts at our front door



Light pollution is often associated with cities, but individual homes play an important role in shaping the nighttime environment.

Imagine the difference it would make if every home on your block followed the Five Principles for Responsible Outdoor Lighting.

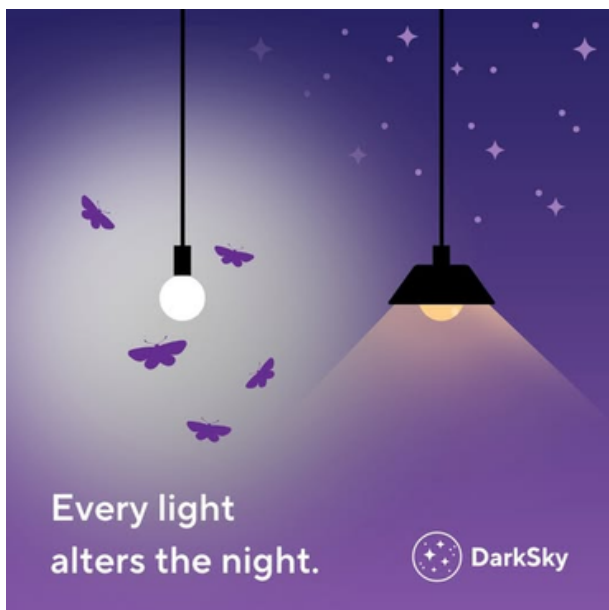
Small changes at home can ripple outward and improve the night for an entire neighbourhood.

You've probably heard the saying, 'be the change you want to see'.

[DarkSky's Home Outdoor Lighting Assessment](#) provides a practical guide for evaluating the lights around your home and making simple improvements. And this isn't about plunging your property into darkness. DarkSky understands that people need light at night. The goal is to choose quality lighting that improves safety and visibility while protecting the nighttime environment.

Remember, protecting the night can start right at your own front door. Making a meaningful change at home can be the first step in helping to protect the night sky from ever more light pollution.

Source: Dark Sky International



I AM NOT CLUMSY.

I navigated by moonlight for 230 million years. Your porch light broke me.

✓ MOONLIGHT NAVIGATION

Moon is far away. Angle stays constant. Flight path = straight. Navigation works. 230 million years.

✗ PORCH LIGHT

Light is close. Angle changes. Flight path = spiral. Crash. Exhaustion. Death.

GEOMETRY DIAGRAM

GEOMETRY DIAGRAM

TIMELINE

3 YEARS underground

a few weeks to mate

spiraling against your porch light for 6 hours

dead on the welcome mat.

SCARAB HERITAGE

Scarab beetles: 230 million years old. Older than flowers. Older than birds. Older than mammals.

An ancient navigator in a world full of false moons. Turn the light off.

Source: Dark Sky International posts

YOUR OUTDOOR LIGHT IS KILLING YOUR NIGHT POLLINATORS

They pollinate what bees can't reach — after dark

THE NIGHT SHIFT — pollinates flowers bees never reach



YOUR OUTSIDE WALL LIGHT — a false moon. Exhaustion trap.



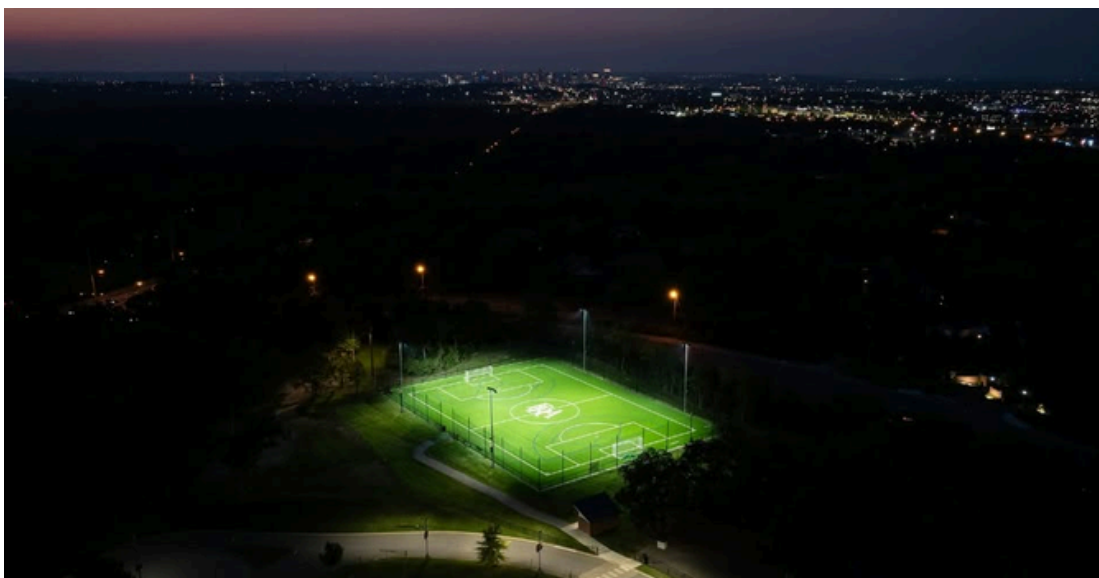
WHITE BULB — attracts moths



AMBER LED — moths navigate past it

*Switch it. 30 seconds.
Your garden gets pollinated.
Your path stays lit.*

The night shift was working for your garden. The wrong bulb stopped it.



It just goes to show what's possible when we put our minds to it in the interests of the night sky, nocturnal species and the capacity for seeing the night sky in all its glory.



Australian Plant Society - Hunter

APS Hunter members are committed to growing, propagating, conserving, appreciating and sharing Australian native plants.

Meetings are held at:
Shortland Wetlands Centre, Shortland
More information:
<https://austplants.com.au/Hunter-Valley>
Get in touch:
Michael Belcher, President – 4930 1458
huntervdg@austplants.com.au



Lake Macquarie Camera Club



Monthly Club nights, second
Wednesday of each month, 7pm.
Valentine Bowling Club.

More information:

[LMCC website](#)

Email:

lakemacquariecameraclub@gmail.com



To create a free meeting place where people come together to repair and give a new lease of life to their stuff. We want to help people connect with their local community, reduce waste, share skills and build friendships.

repaircafelakemac@gmail.com
sustainableneighbourhoods.org.au/repair-it-lake-mac.html
Check the Facebook website for details of where and when.



Hunter Bird Observers Club

Affiliated with BirdLife Australia

www.hboc.org.au

Hunter Bird Observers Club

Meet 7.00pm second Wednesday of each month (except January)
[Hunter Wetlands Centre](#)
1 Wetlands Place, Shortland

Email: info2@hboc.org.au



The **Groundswell Collective**, changemakers with a vision to create a thriving, connected and sustainable community. We work with partners to deliver impactful projects that help to:

- accelerate the transition to renewable energy and net zero
- support the sustainable use of resources and adoption of circular economy principles and practices,
- increase tree cover and promote the planting of indigenous Australian plants.

Contact at:
0498 999 021

info@thegroundswell.org.au



Lake Macquarie Landcare is a partnership between the Lake Macquarie Landcare Volunteer Network Inc, Lake Macquarie City Council and almost

200 Landcare groups, supported through the Landcare and Sustainable Living Centre, umali barai-ku.
80 Toronto Road, Booragul
(02) 4921 0392
lro@lakemac.nsw.gov.au



Lucilla Ridge Landcare

Meet every 2nd Saturday
9.00am for an hour
Contact: Heather Carter
0438 288 617 or
Heidi Keft - 0422 046 094



Biddabah Creek Landcare

Meet every Wednesday
8.00am - 10.00am
Windross Drive, Warners Bay
Wetlands site
Contact:
Vina Chubb 0437 492 387or
Julie Butel 0430 456 212



Friends of Munibung Hill Landcare

Meet every Saturday
8.00am - 11.00am
cul-de-sac Parkstone Close
Speers Point
Contact:
Gavin: 0410 426 433

COMMUNITY

Munibung Hill Conservation Society partners with or shares common goals with many other organisations.



Monthly meetings, first Tuesday of the month at 5:30pm
Valentine Bowling Club,
17A Valentine Crescent, Valentine.
Contact: WarnersBaySNG@gmail.com
Follow on Facebook at: https://www.facebook.com/WBSNG/?locale=sk_SK



80 Hayden Brook Rd
Woodrising NSW 2284

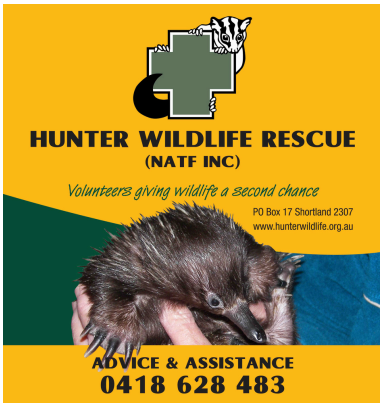
info@woodrisingchildcare.com.au
Phone: 4950 4212



The Eco Angel Program is designed to help schools, community groups, businesses and individuals keep Lake Macquarie clean all year round.

We will help by:

- Promoting your event and encouraging others to volunteer,
- Providing a free clean-up kit including litter bags, gloves, merchandise and appropriate paperwork,
- Collecting and disposing of waste from the clean up.



For general information or enquiries contact:
The Secretary
secretary@hunterwildlife.org.au
SHORTLAND



Invertebrate animals make up around 55% of known Australian biodiversity and >95% of known Australian animal diversity. They are fascinating and absolutely crucial to the functioning of our ecosystems. However, they are largely ignored in conservation planning despite hundreds of species listed as threatened.

<https://invertebratesaustralia.org/>



The Lighting Society Newcastle

is a branch of the NSW Illuminating Engineering Society chapter. IES promotes the art and science of lighting with a mission to improve life through quality of light. Three technical or educational events are held each year for the community and industry, with the aim to promote, inform and celebrate the lighting design discipline. Monthly meetings are held with the wider NSW chapter.



Newcastle Astronomical Society

University of Newcastle,
Room CT202, Ring Road, Newcastle
Contact: 0425 796 685
E: president@thenas.com.au



AUSTRALASIAN DARK SKY ALLIANCE

Local councils, tourism representatives, health practitioners, ecologists, astronomers and the lighting industry. Australasian Dark Sky Alliance brings together groups actively working to create artificial light at night awareness.

Visit:

[Australasian Dark Sky Alliance](http://AustralasianDarkSkyAlliance.com)



DarkSky International restores the nighttime environment and protects communities from the harmful effects of light pollution through outreach, advocacy, and conservation.

Visit:

<https://darksky.org/>



EcoAdvocate

is a Lake Mac Council publication providing regular updates on eco-related news and events happening around the Lake Mac LGA.

Email address
ecoadvocate@lakemac.nsw.gov.au



Discover the beauty of the Australian bush with Newcastle Ramblers. Whether you're a family or an individual, there's something for everyone. From scenic day walks to backpacking, cycling, kayaking, or travel adventures - activities cater to all. Curious about upcoming adventures? Check out the Seasonal Program and attend a meeting.

Walking program on website
<https://www.newcastleramblers.org.au/>



Shed Shop,
99 Beaumont Street, Hamilton
also workshops at
143A Kings Road, New Lambton -
down the Lane off Kings Road.
(near Adamstown railway station)

Open 9.00am - 1.00pm Mon -
Thurs & 9.00am - 12.00pm Friday



Supported by
Lake Mac Council
**Sustainable
Neighbourhood News**
is a monthly roundup of what's
going on in the
sustainable neighbourhood
space

Subscribe at:
admin@sustainableneighbourhoods.org.au



Watagan Wanderers Bushwalking Club
runs day walks every week on Wednesday
and Saturday in an area including:
Newcastle and Lake Macquarie, Port
Stephens, the lower Hunter Valley, the
Central Coast and Sydney.
Also other activities, including abseiling/
canyoning, cycling, kayaking/paddling,
multi-day pack walks, car-camps, and
snow-shoe walks.

Meet on third Thursday of each month,
7:30pm, Landcare and Sustainability
Centre, Teralba

To get in touch, send a message:
[https://www.memberjungle.com/
contact-us](https://www.memberjungle.com/contact-us)

A message from the night sky community...

Would you please do
all you can to get rid
of light pollution
caused by artificial
light at night.

Our nocturnal
residents would
really appreciate it.



THE SOCIETY THANKS JEZWEB
for assistance with management of
the Society's:

- Website,
- Munibung Musings Magazine
- Other internet services.

Jezweb specialises in
Website Design, Search Engine
Optimisation, Website Hosting

1300 024 766
E: help@jezweb.au
www.jezweb.com.au

Thanks to
Jeremy Dawes and Lachlan Carney.



Meet at Pavement Society Cafe
Main Road, Boolaroo
Sundays 6.00am
rain, hail or shine
Move at 06:15

Start cnr Fourth/Main Rd,
Boolaroo
All Welcome

Follow on Instagram:
[https://www.instagram.com/bun
gersrunclub/](https://www.instagram.com/bungersrunclub/)

To do:

- Check out organizations like the International Dark Sky Association for more tips
- Turn off lights when you are not using them
- Close blinds at night
- Use warm, dim lights instead of white or blue lights
- Switch to using auto-off security lights
- Push for directional streetlights in your community

[https://kids.frontiersin.org/
articles/10.3389/frym.2023.1137068](https://kids.frontiersin.org/articles/10.3389/frym.2023.1137068)



Munibung Hill Conservation Society
is an advocate for nature, for living on land that has been
occupied for millions of years by species of the fungal, plant
and animal kind, great and small, seen and unseen.